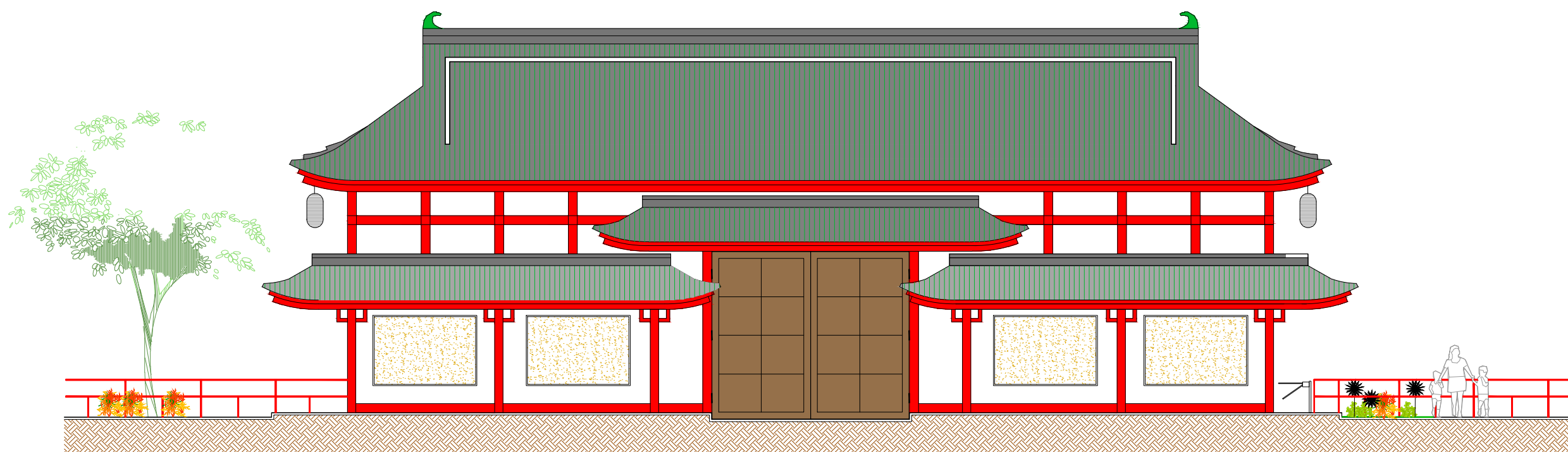
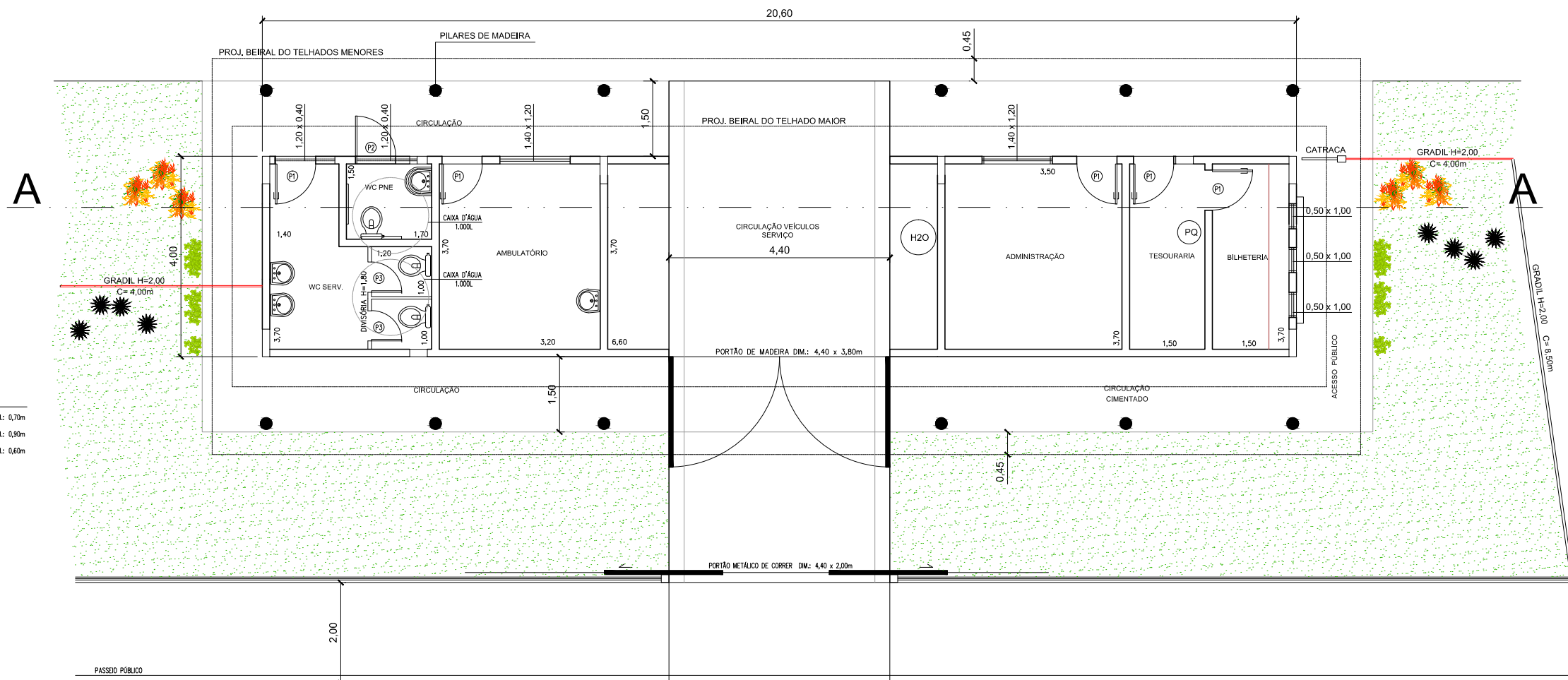


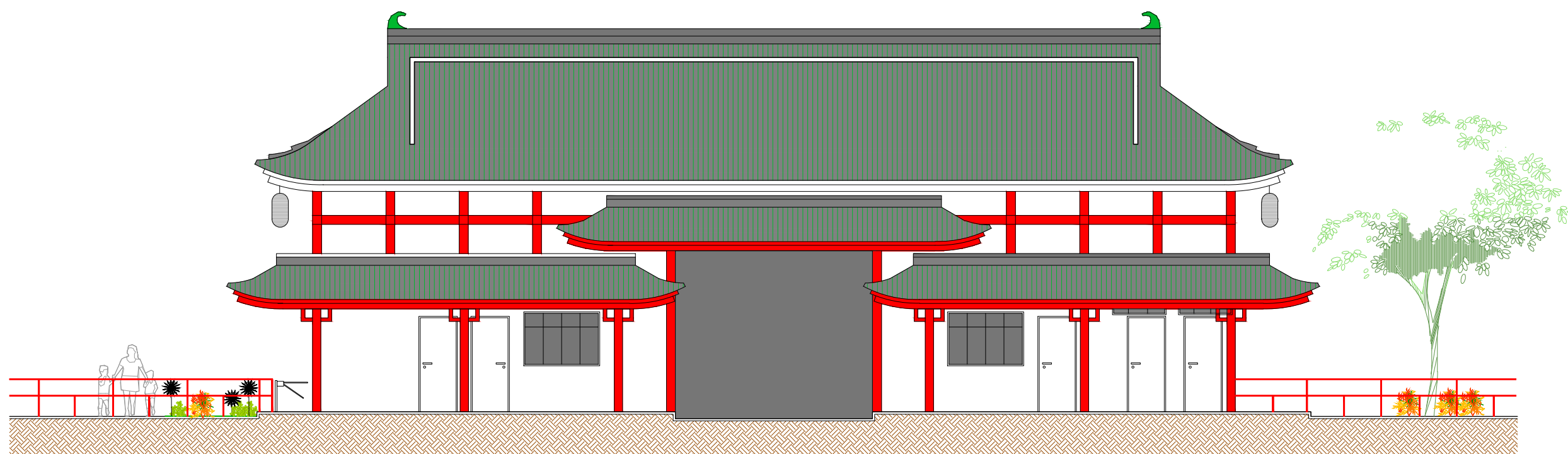
CORTE LONGITUDINAL AA ESC.: 1:100



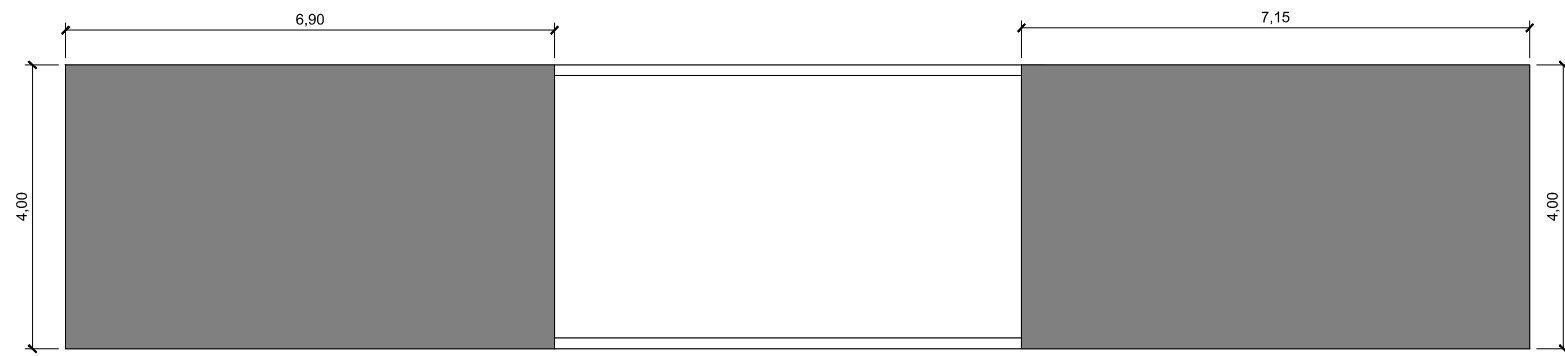
ELEVÇÃO PRINCIPAL - ENTRADA ESC.: 1:100



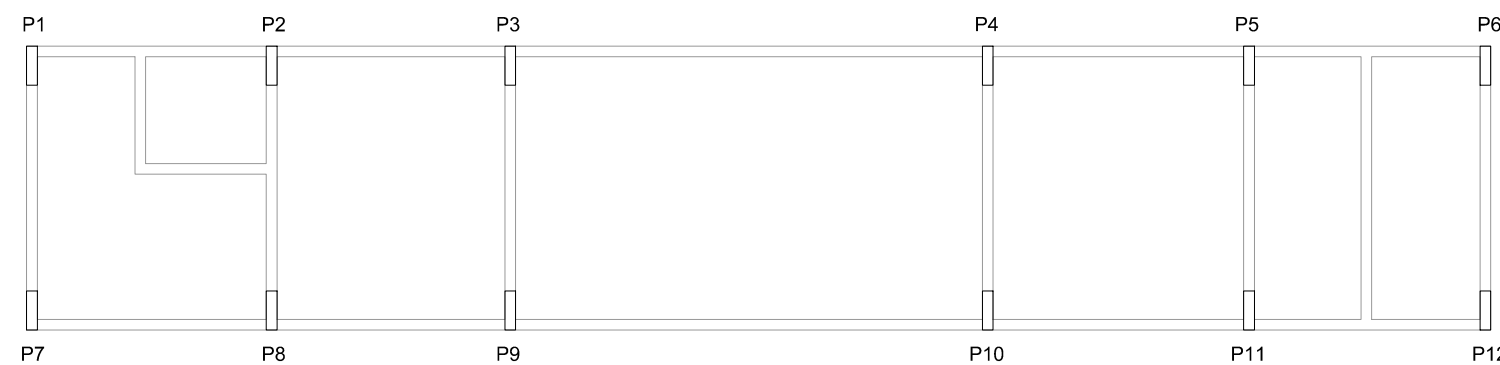
PLANTA BAIXA ESC.: 1:100



ELEVÇÃO - SAÍDA ESC.: 1:100



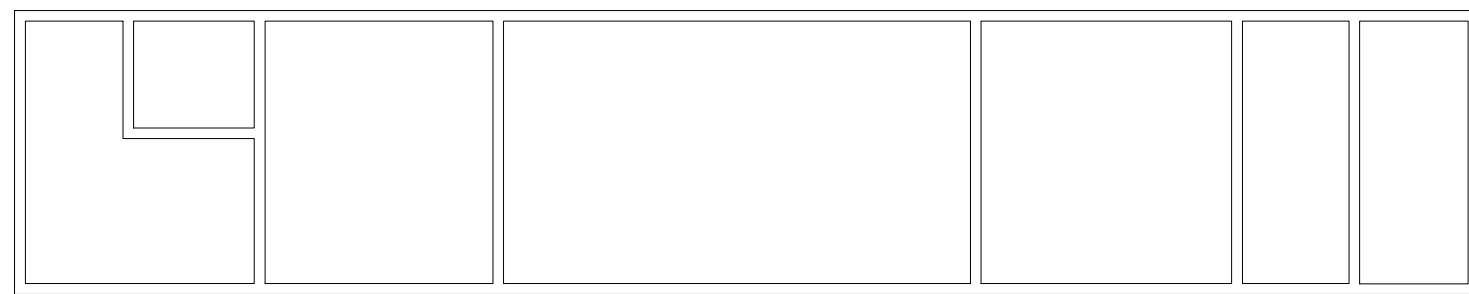
PLANTA BAIXA - LAJE A CONSTRUIR ESC.: 1:100



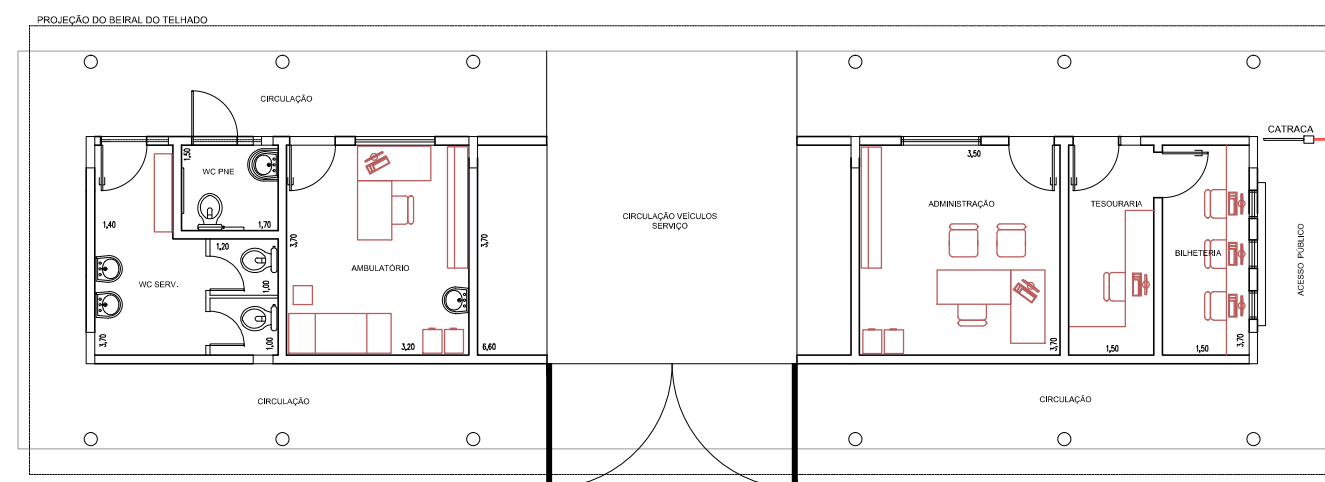
PLANTA BAIXA - PILARES A CONSTRUIR ESC.: 1:100



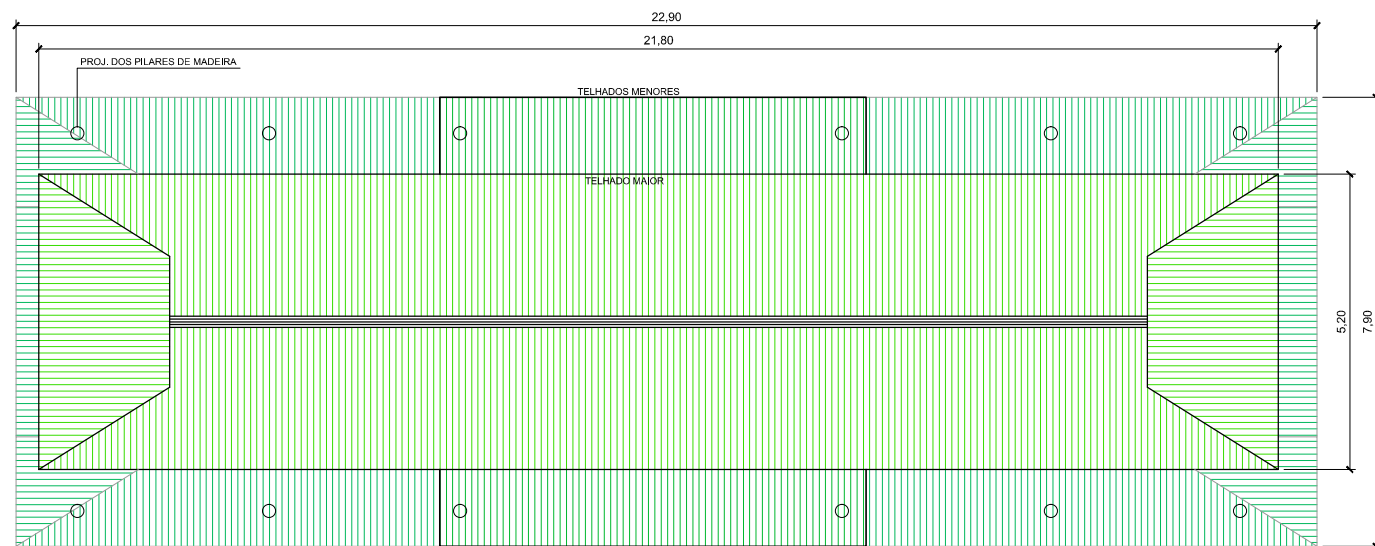
PLANTA BAIXA - VIGAS A CONSTRUIR ESC.: 1:100



PLANTA BAIXA - VIGA BALDRAME EXISTENTE ESC.: 1:100



PLANTA BAIXA - LAY OUT ESC.: 1:125



PLANTA BAIXA DA COBERTURA ESC.: 1:125

QUANTITATIVO

VIGA				
VERGA	V1 = V2 =	L = 0,30	C = 3,70	x3
CONTRA VERGA	V3 = V4 =	L = 0,20		
VIGA LAJE	V5 = V6			
VERGA	V7 = V8 =	L = 0,30	C = 3,20	x3
CONTRA VERGA	V10 = V11 =	L = 0,20		
VIGA LAJE	V12 = V14			
	V9 = V13 =	L = 0,30	C = 3,50	
COBERTURA	V1 = V6 =	L = 0,30	C = 3,20	x1
	V7 = V8 =	L = 0,30		
	V10 = V11 =	L = 0,20		
COBERTURA	V9 = V13 =	L = 0,30	C = 3,50	x1
		L = 0,20		

PILARES		
12 UNIDADES	L = 0,40 L = 0,20	H = 6,20

VIGA			
VIGA DE ENTRADA DE VEÍCULOS	V15 = V16	L = 0,20 L = 0,70	C = 6,60 x2
LAJE COBERTURA			